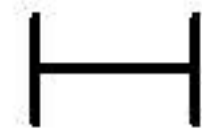


300 nm



Mag = 25.00 K X

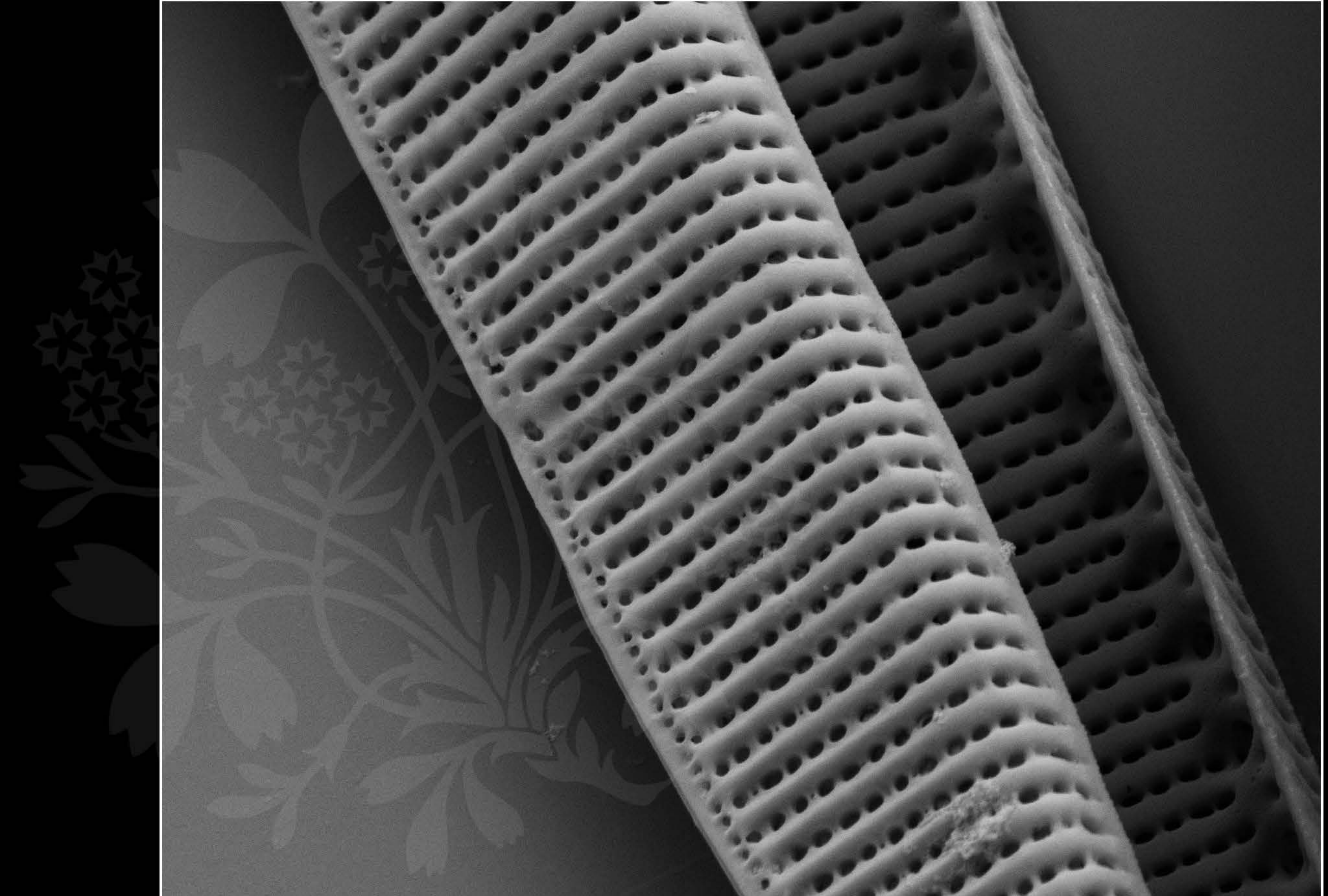
EHT = 5.00 kV

Signal A = SE2 Date :8 Oct 2018

WD = 4.5 mm

File Name = TCC551_tilt25_01.tif





1 μm

Mag = 20.00 K X

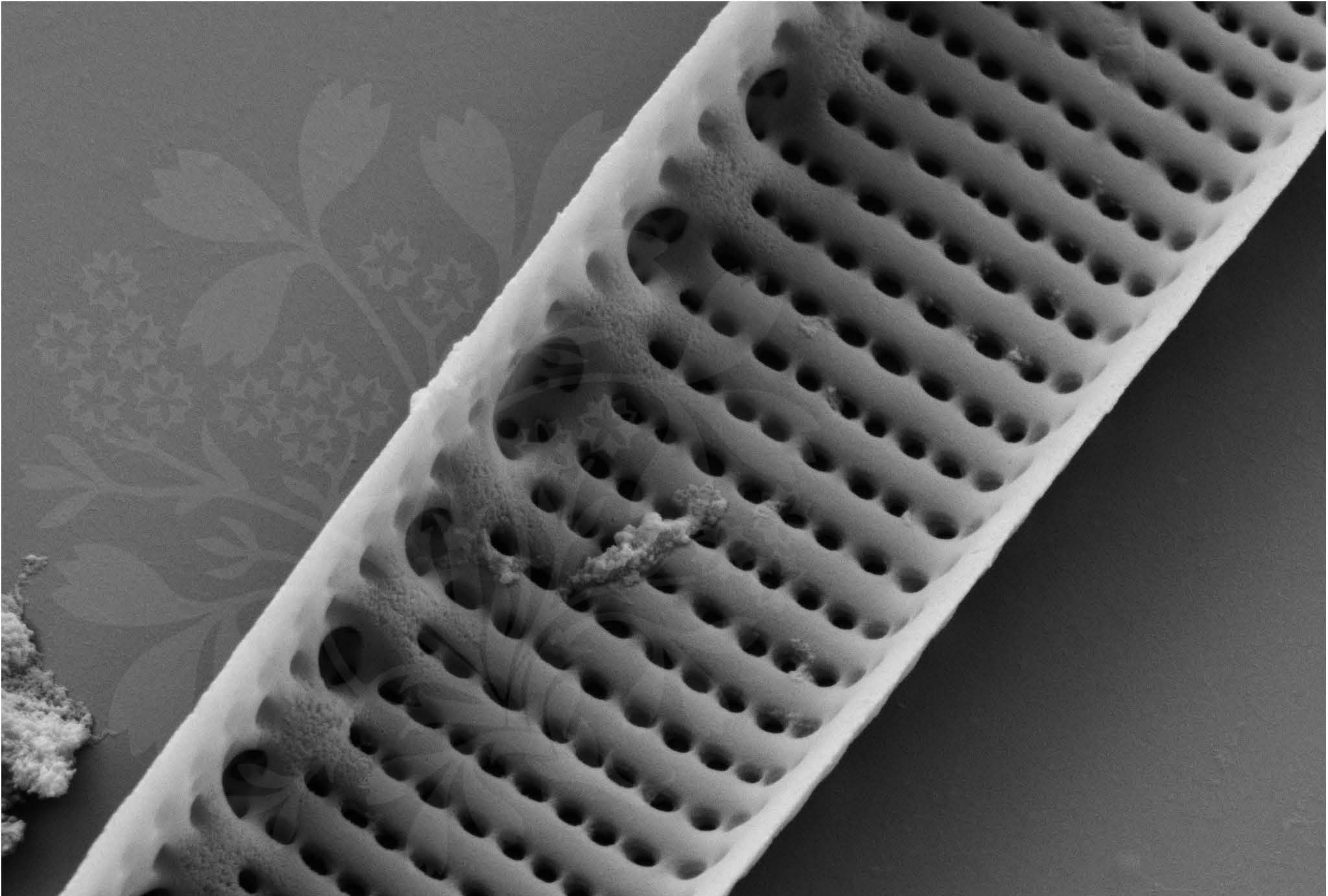
EHT = 5.00 kV

Signal A = SE2 Date :8 Oct 2018

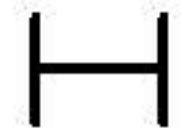
WD = 4.5 mm

File Name = TCC551_tilt25_02.tif





200 nm



Mag = 30.00 K X

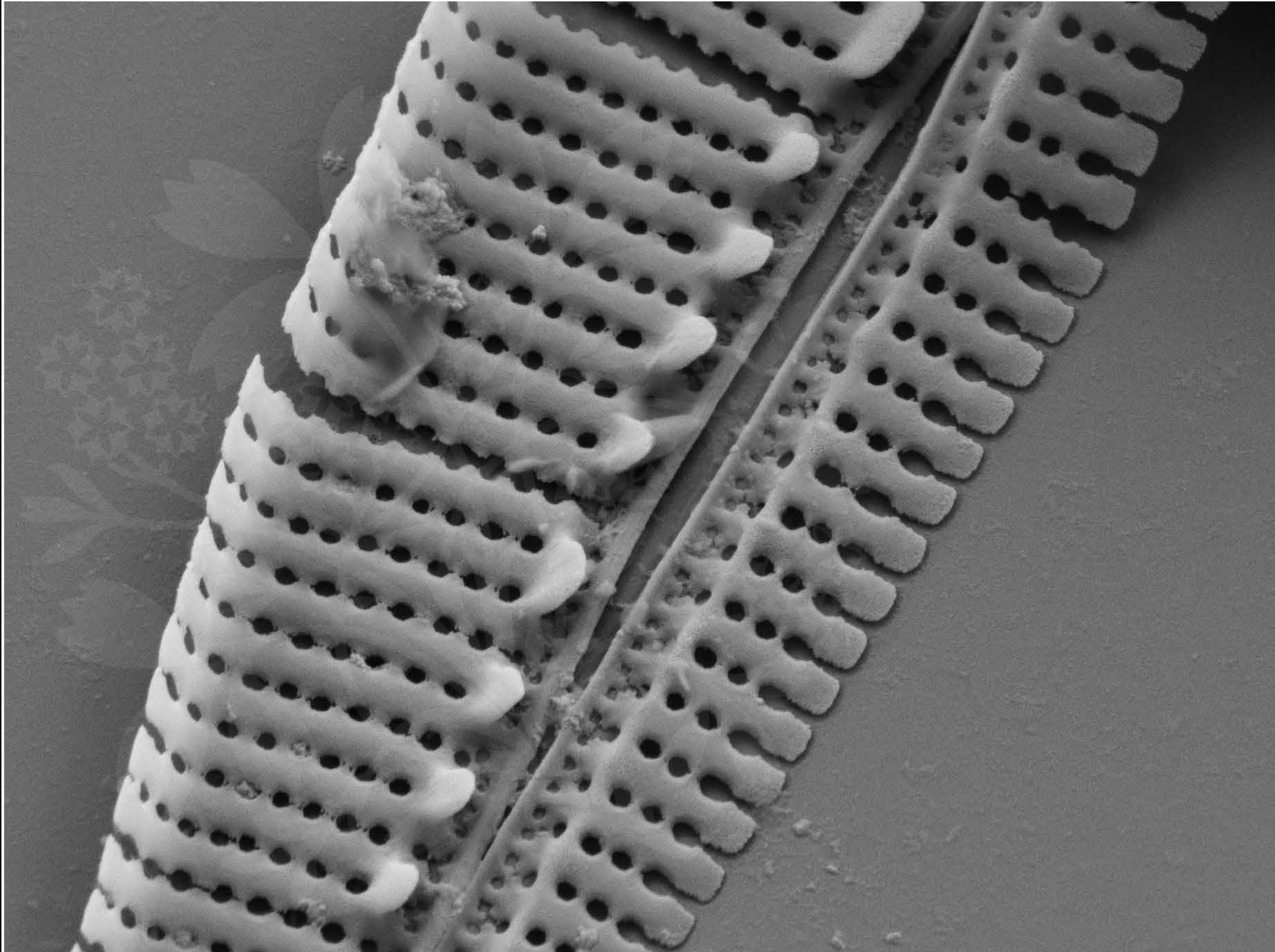
EHT = 5.00 kV

Signal A = SE2 Date :8 Oct 2018

WD = 4.5 mm

File Name = TCC551_tilt25_03.tif





300 nm



Mag = 25.00 K X

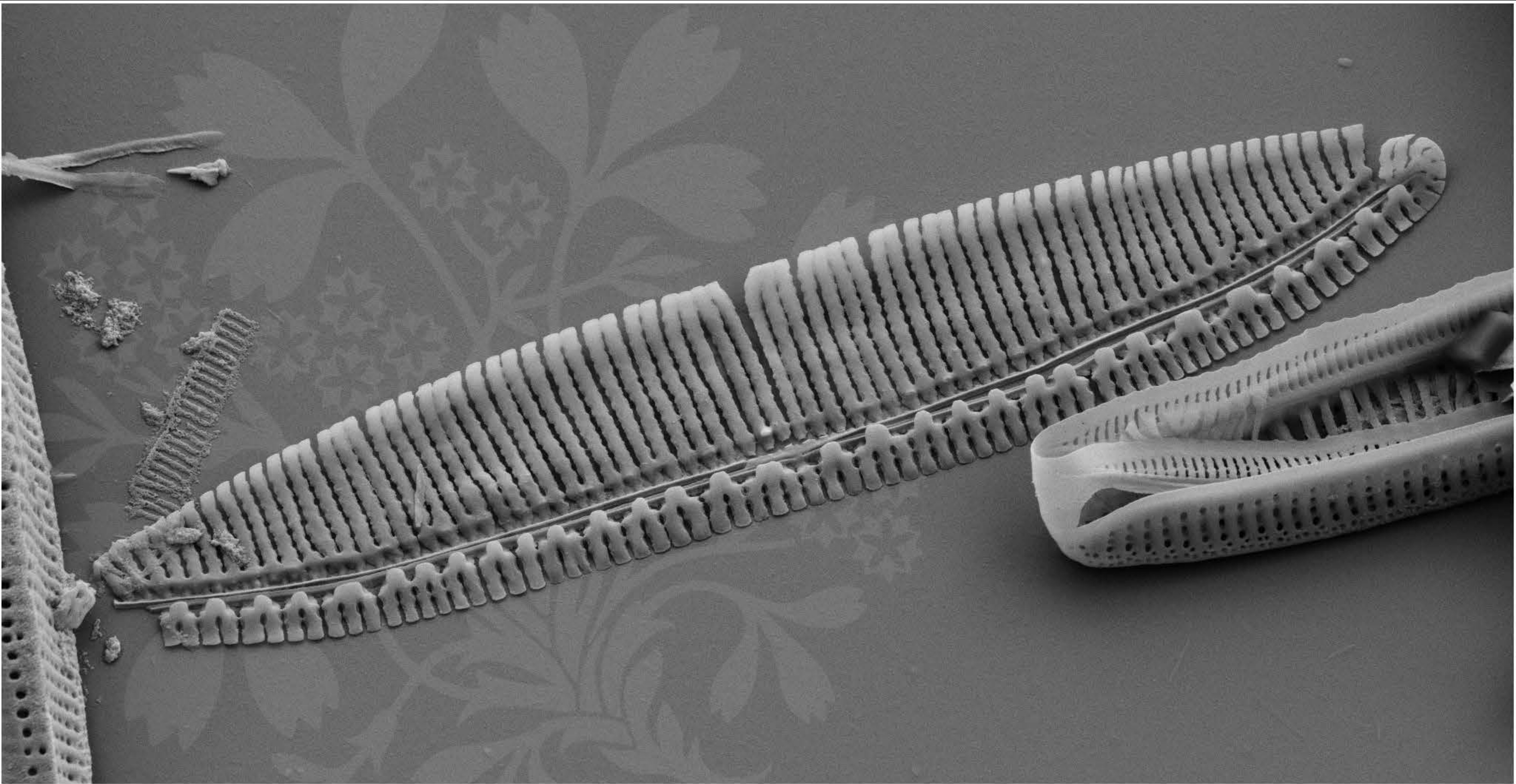
EHT = 5.00 kV

Signal A = SE2 Date :8 Oct 2018

WD = 4.5 mm

File Name = TCC551_tilt25_04.tif





1 μm
┌───┐

Mag = 8.00 K X

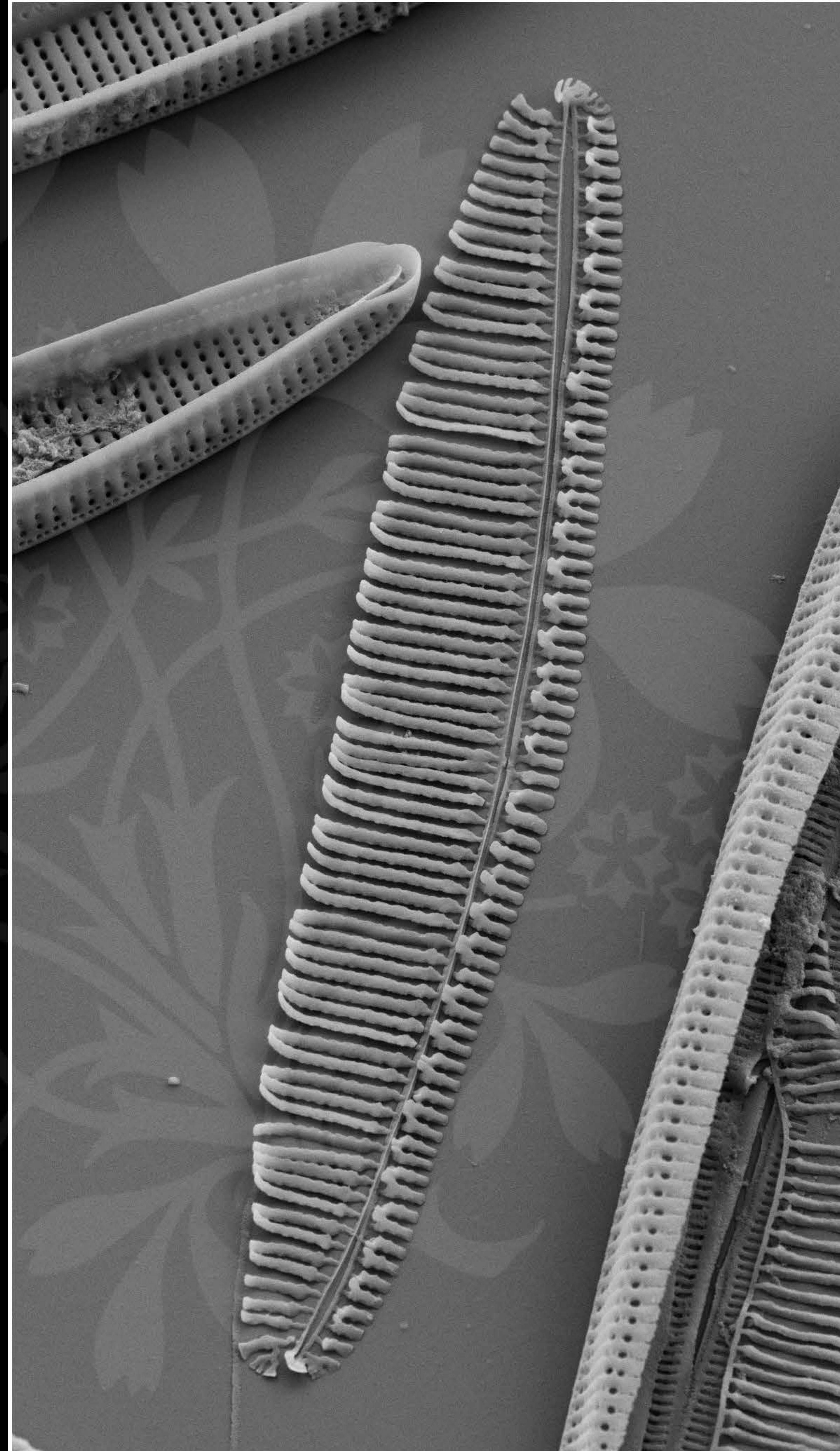
EHT = 5.00 kV

Signal A = SE2 Date : 8 Oct 2018

WD = 4.5 mm

File Name = TCC551_tilt25_05.tif





1 μm
H

Mag = 5.50 K X

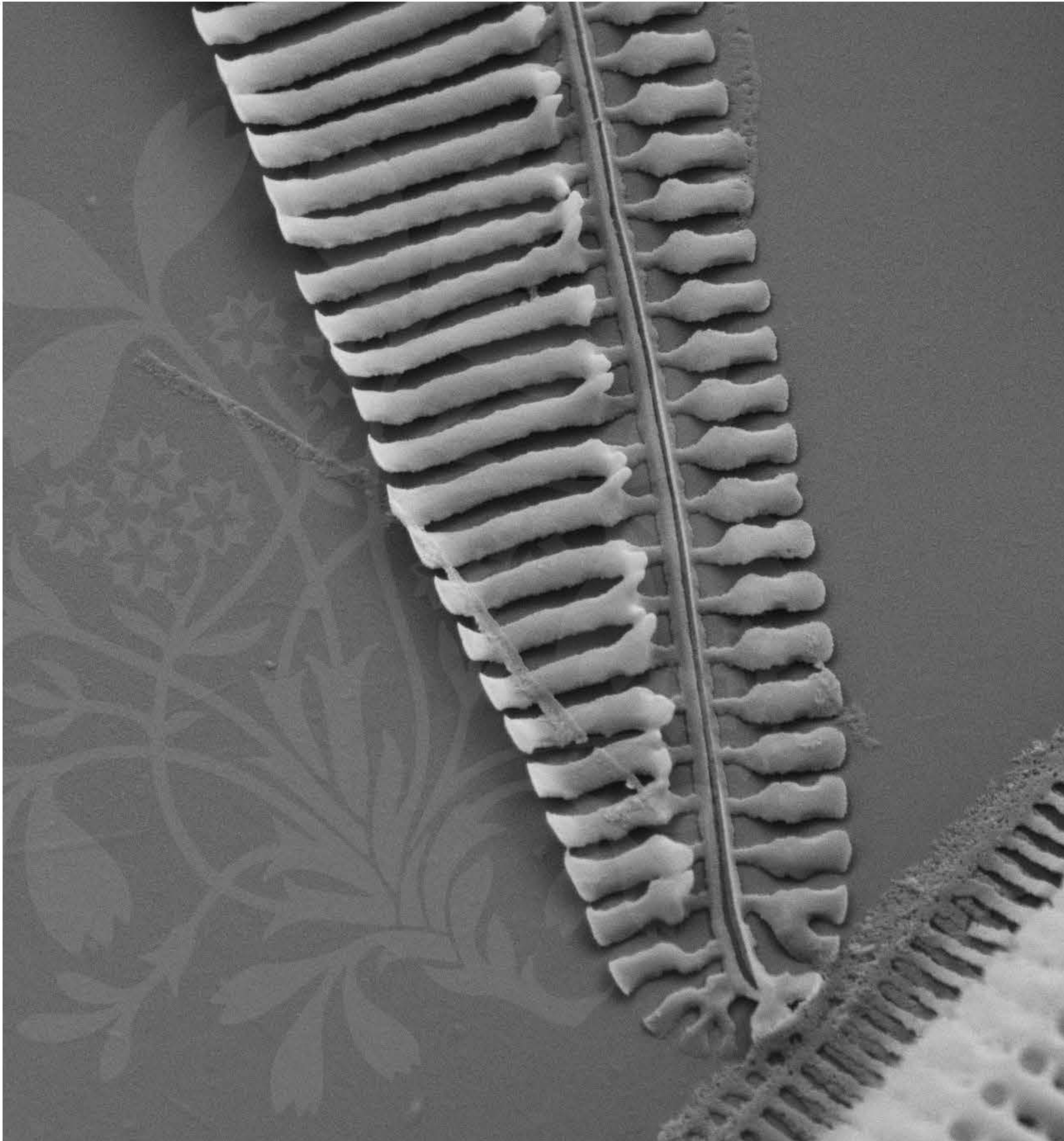
EHT = 5.00 kV

Signal A = SE2 Date :8 Oct 2018

WD = 4.5 mm

File Name = TCC551_tilt25_06.tif





1 μm
|-----|

Mag = 20.00 K X

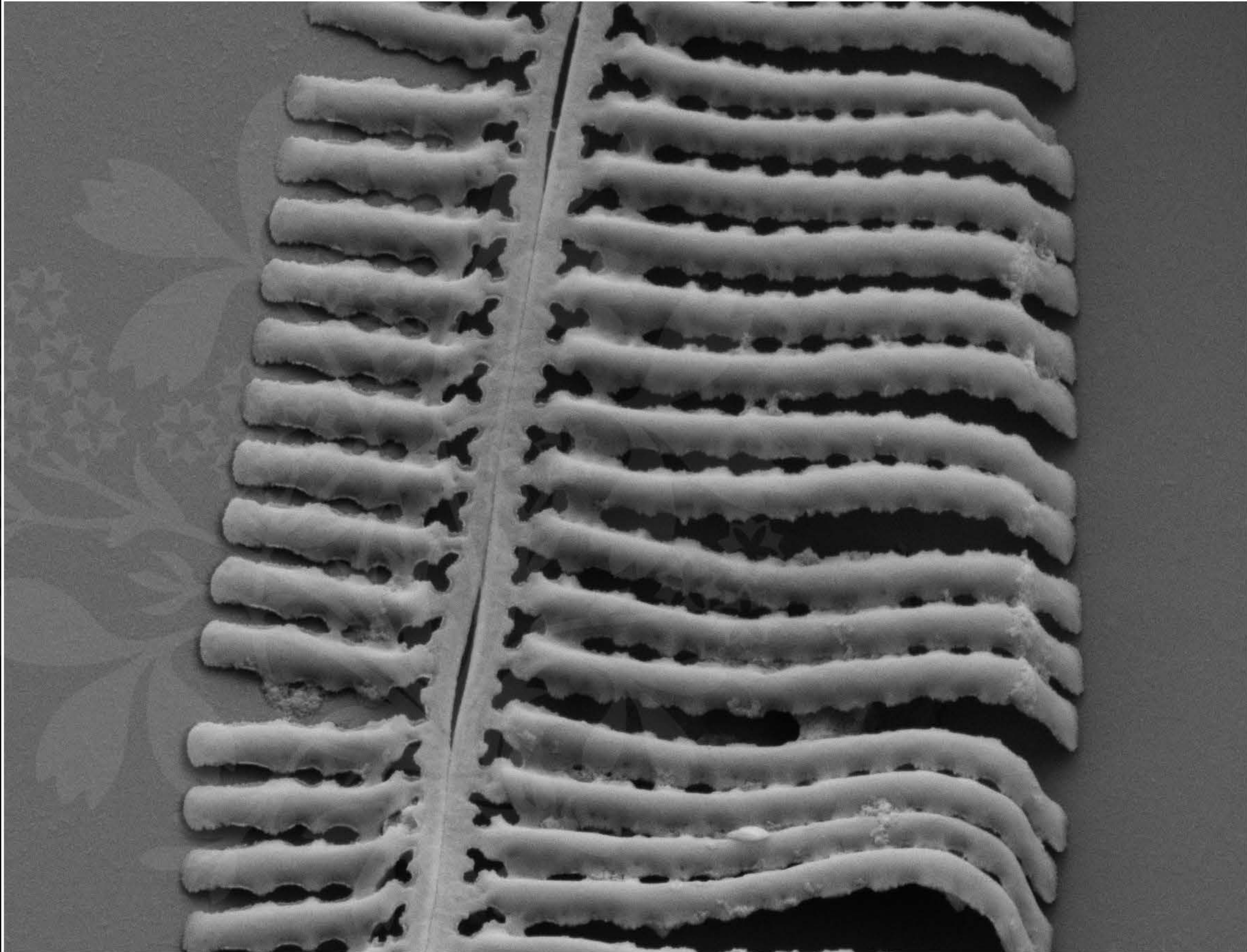
EHT = 5.00 kV

Signal A = SE2 Date :8 Oct 2018

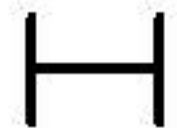
WD = 4.5 mm

File Name = TCC551_tilt25_07.tif





200 nm



Mag = 30.00 K X

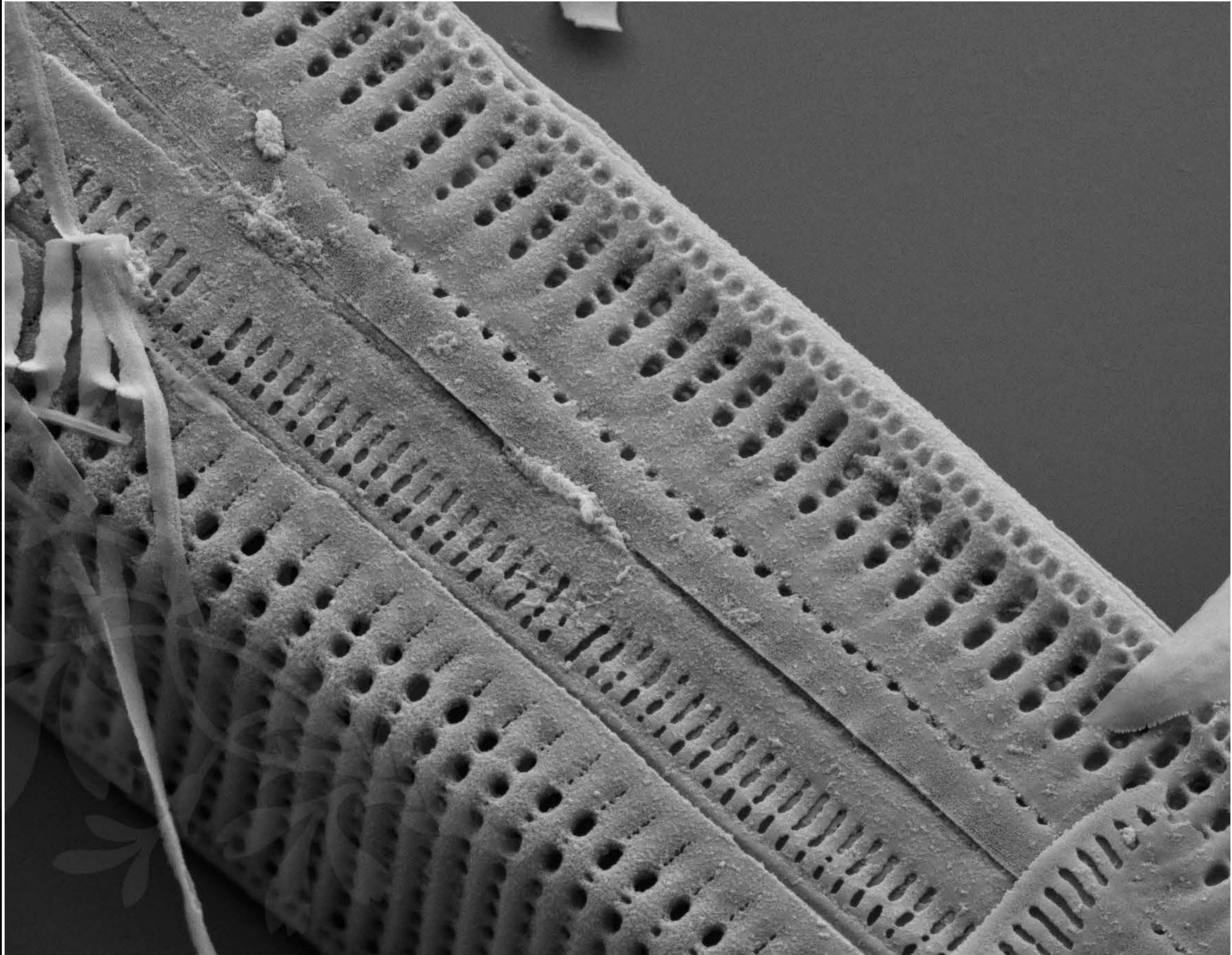
EHT = 5.00 kV

Signal A = SE2 Date :8 Oct 2018

WD = 4.5 mm

File Name = TCC551_tilt25_08.tif





1 μm

Mag = 20.00 K X

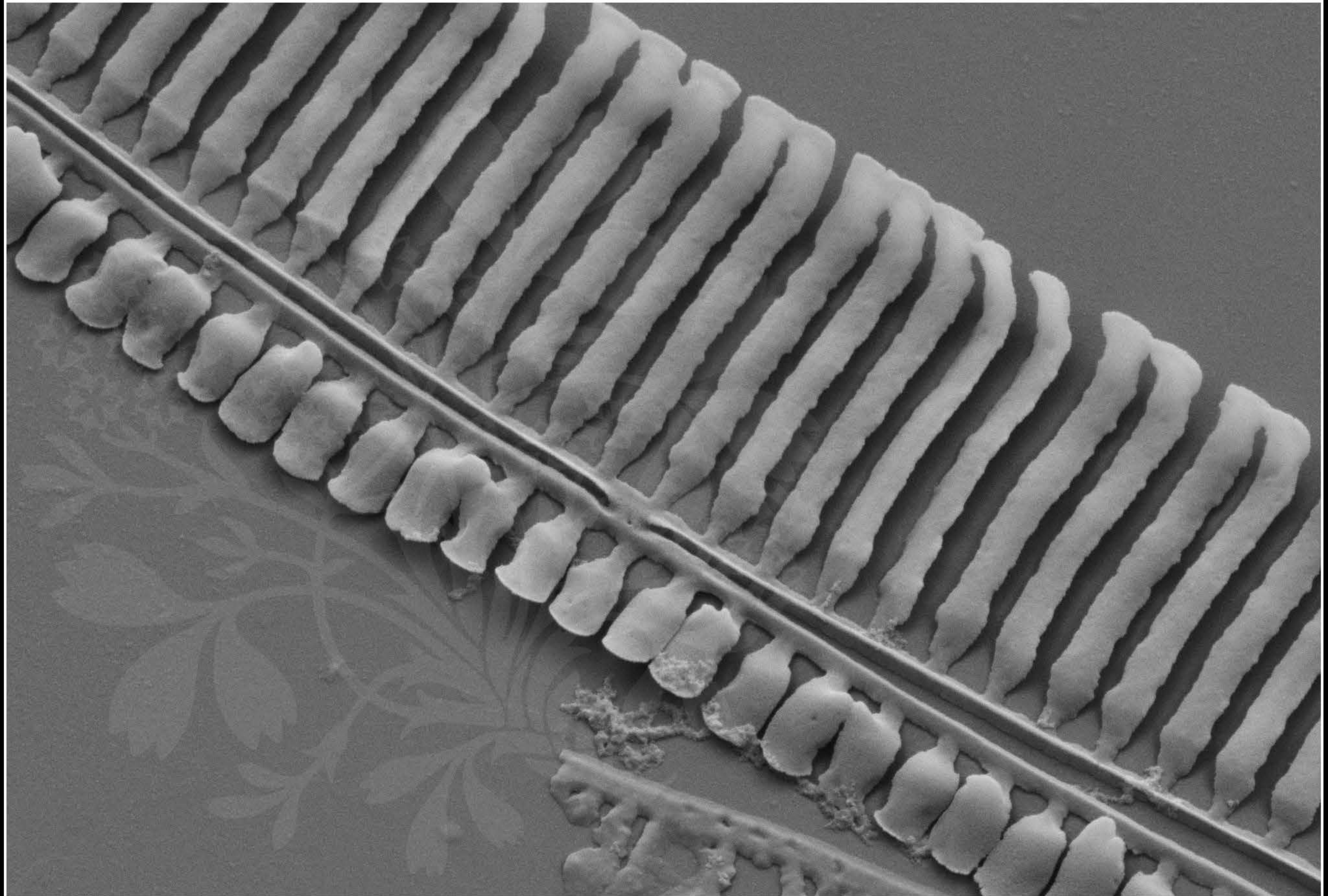
EHT = 5.00 kV

Signal A = SE2 Date :8 Oct 2018

WD = 4.5 mm

File Name = TCC551_tilt25_09.tif





200 nm



Mag = 30.00 K X

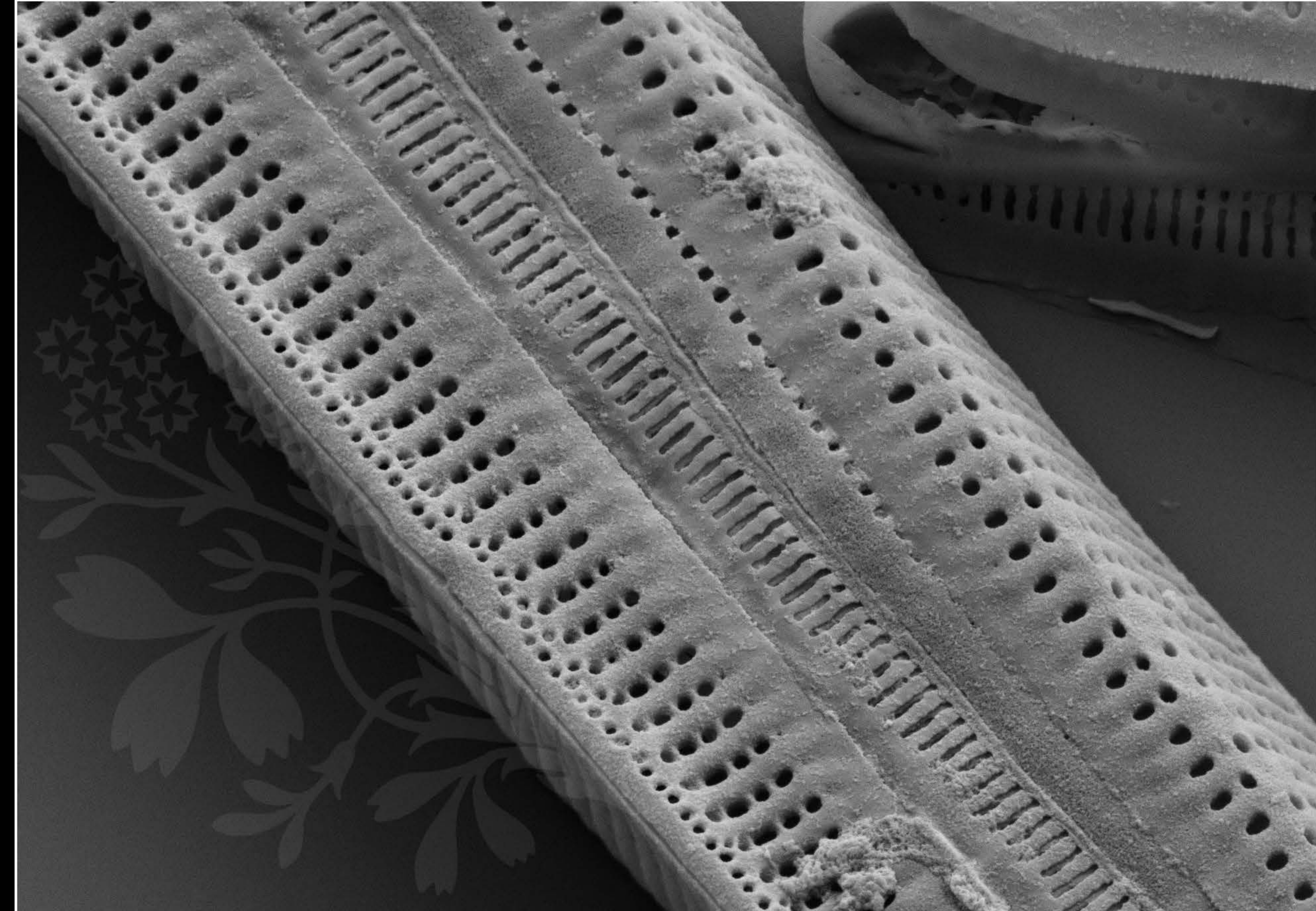
EHT = 5.00 kV

Signal A = SE2 Date :8 Oct 2018

WD = 4.5 mm

File Name = TCC551_tilt25_10.tif





1 μm

Mag = 20.00 K X

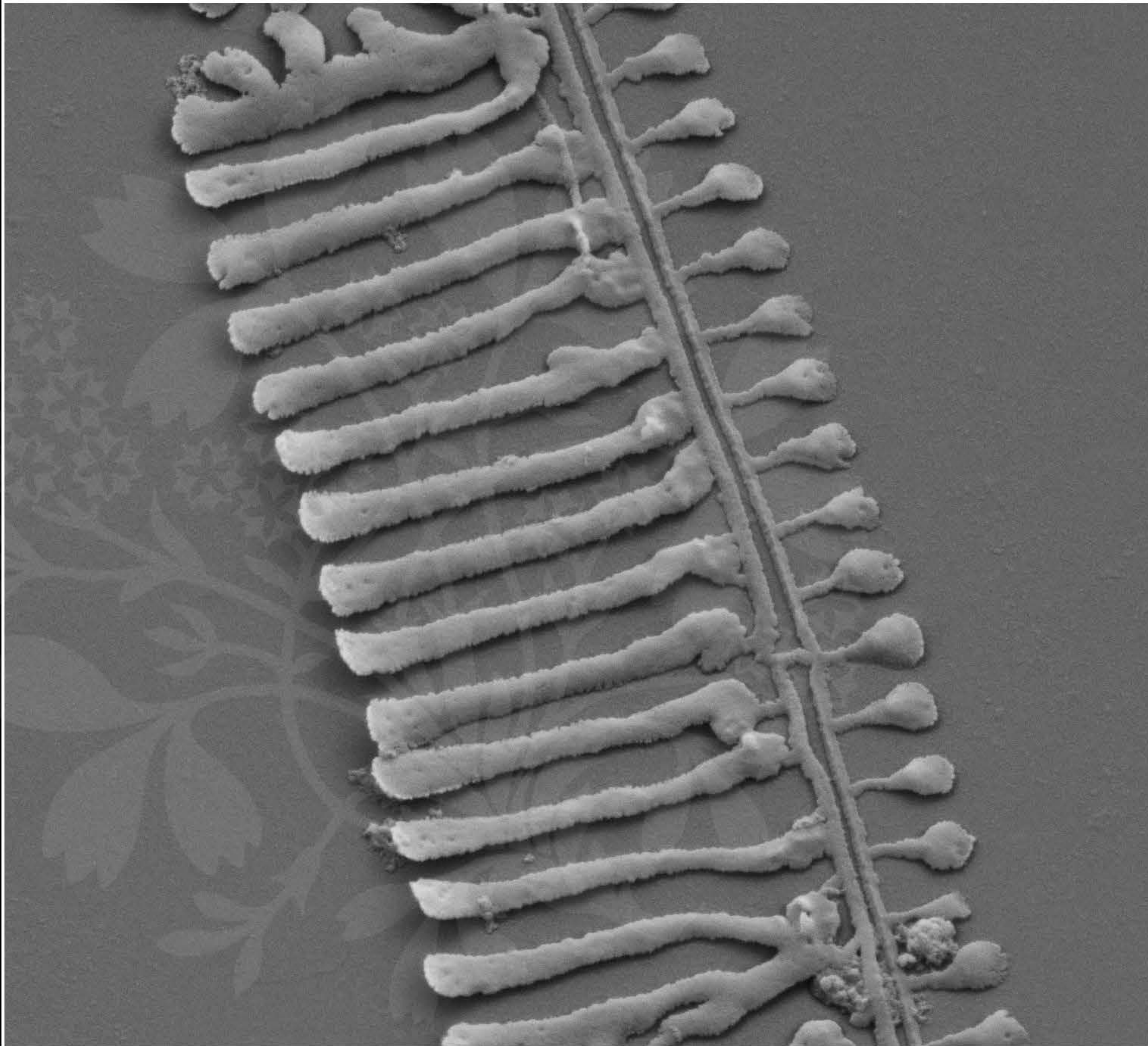
EHT = 5.00 kV

Signal A = SE2 Date :8 Oct 2018

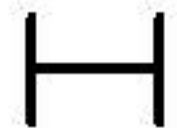
WD = 4.5 mm

File Name = TCC551_tilt25_11.tif





200 nm



Mag = 30.00 K X

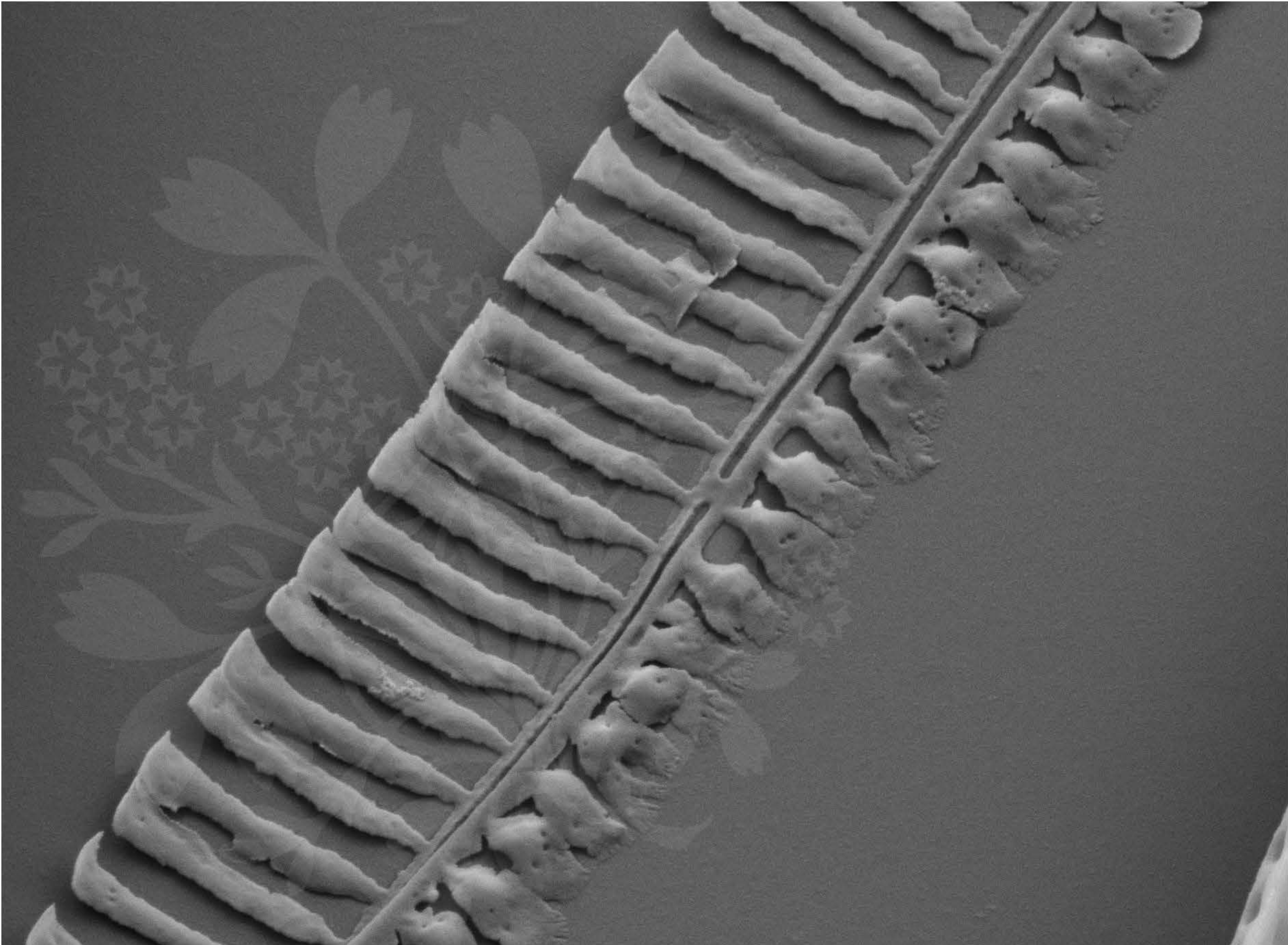
EHT = 5.00 kV

Signal A = SE2 Date :8 Oct 2018

WD = 4.5 mm

File Name = TCC551_tilt25_12.tif





200 nm



Mag = 30.00 K X

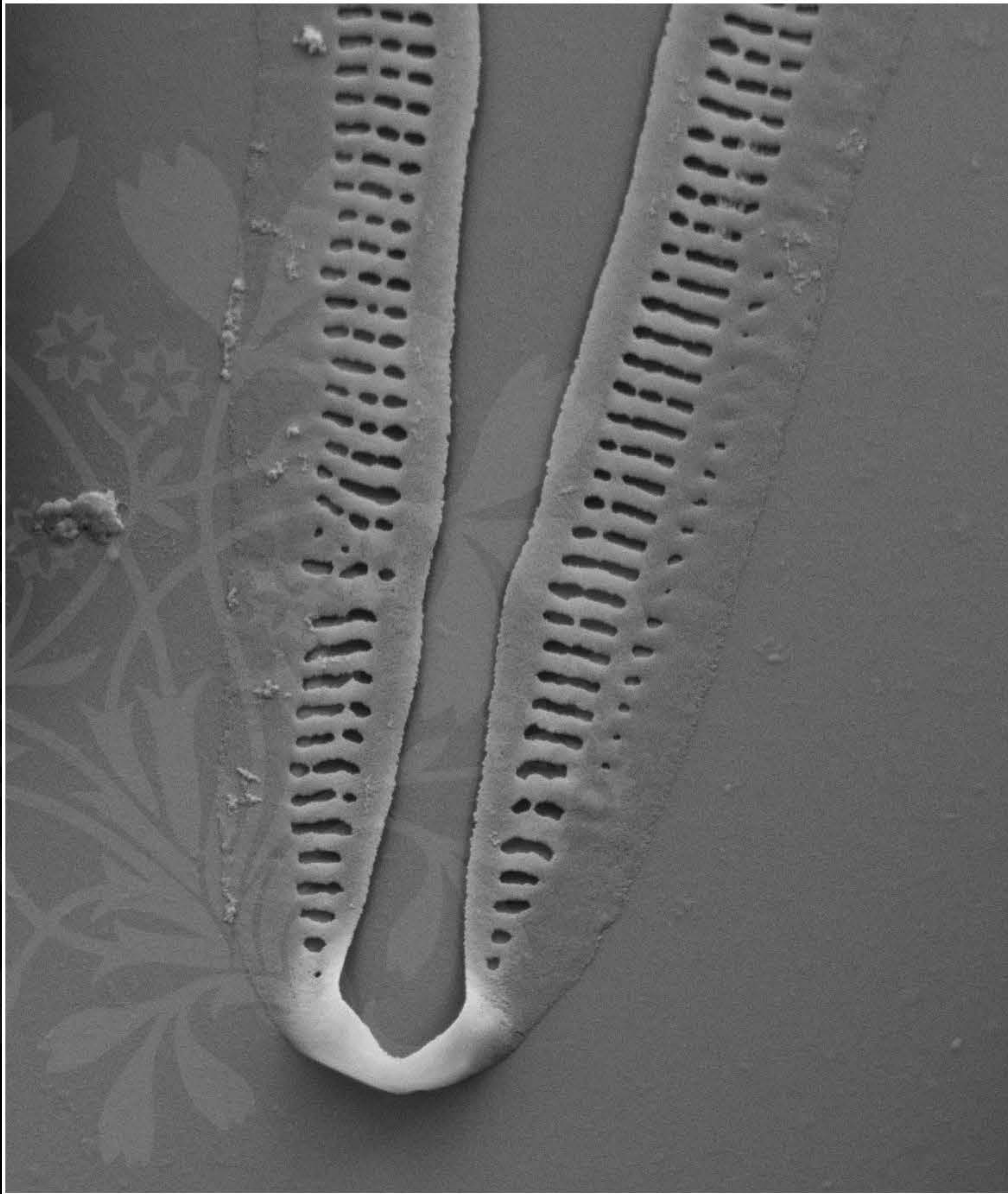
EHT = 5.00 kV

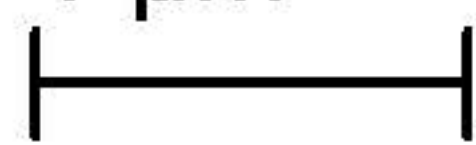
Signal A = SE2 Date :8 Oct 2018

WD = 4.5 mm

File Name = TCC551_tilt25_13.tif





1 μm


Mag = 20.00 K X

EHT = 5.00 kV

Signal A = SE2 Date :8 Oct 2018

WD = 4.5 mm

File Name = TCC551_tilt25_14.tif

